

APE Pumps
Portfolio



APE
p u m p s

Leaders in pump innovation

011 824 4810

www.apepumps.co.za

Index

	Page
Company History	01
General Information	04
Commerical Information	05
Head Office Information	06
Manpower Schedule	07
Major completed projects by PSV Services and APE Pumps	08
APE / Mather & Platt product list	20

Company History

The Founder Company, PSV Services was originally established in 1988, and operated from Sebenza, Edenvale, South Africa.

The Company was involved in various fields of Activity, mainly supply of Pumps, Pump Spares, Valves, and Turnkey Electro-Mechanical Contracting.

Due to the Formation of NEPAD, by the SA Government and PSV Services Commitment to it, PSV Zambia, based in Kitwe was established, mainly to Service the High-Pressure Pump Division of the Zambian Copper Mines and the DRC Territories, with PSV Zambia having been running/operating successfully since then.

After a long and fruitful Company History, with PSV Services (PTY) LTD, having grown substantially, the Company listed with ALTX, as PSV Holding Limited in 2006.

The Founder Company PSV Services then moved to Wadeville, Germiston, to share premises with APE PUMPS, one of the Largest Pump Manufacturing Companies in South Africa, which had just been acquired by PSV Holdings LTD.

While the 2 companies were still

running as separate Entities, they had a very close Relation together running a combined Machine and Assembly Shop.

With the new Acquisition of Mather & Platt SA the Pump Section of the PSV Holding Group of Companies, became the Major Force in Pump Manufacturing and Turnkey Water Projects to reckon with in Southern Africa.

Then in June, 2012, WPIL Limited, a major Indian Company, with about 60 years of Experience in Design, Developing, Manufacturing, Erection, Commissioning and Servicing of Pumps and Pumping Systems, invested in South Africa, by acquiring a Number of Companies in their Industry and were poised to further invest in their Local Manufacturing Capacity through Expansion and Development.

WPIL acquired the Shares of APE Pumps and Mather & Platt and with it the Business of PSV SERVICES with effect from June, 2012. All three of these businesses were trading under valid BEE Certificates at the time.

For further Information of the Purchase, please refer to the attached Letter, dated the 1st of February, 2013.



1st February 2013

WPIL Limited, a major Indian company with about 60 years in Designing, Developing, Manufacturing, Erecting, Commissioning and Servicing of Pumps and Pumping Systems, has invested in South Africa by acquiring a number of companies in their industry and they are poised to further invest in their local manufacturing capacity through expansion and development.

WPIL acquired the shares of APE Pumps and Mather + Platt and acquired the business of PSV Services with effect from June 2012. All three of these businesses were trading under valid BEE certificates at the time. The certificate for Mather + Platt expires and WPIL Limited commissioned Gestalt to access their transformation and to project managed their process of obtaining a new valid BEE certificate. We can place on record that Grant Thornton verification services have been contracted and the new certificate is expected in February 2013.

PSV Services has undergone an internal, re-structuring in terms of which PSV Services (Pty) Ltd has sold its business to APE Pumps (Pty) Ltd.

PSV will operate through APE Pumps and carry all work related history into the APE division. PSV entity will remain, and work as it has for the last 26years, but now through APE Pumps, with all the staff being implemented into the company APE Pumps.

We have operated as two company's since APE Pumps was brought in 2007, by PSV Holdings, so this transaction will not affect any clients at all.

The project division, also known as PSV Services, has also changed the name to APE Pumps (Pty) Ltd but again no personnel changes, or location has been altered.

We assure you of the same level of service from APE as you enjoyed with PSV Services. The registration number of APE Pumps (Pty) Ltd will remain the same as will the VAT number. The banking detail will however change to the following.

STANDARD BANK
BEDFORD GARDENS
ACCOUNT NUMBER: 02 253 1602
BRANCH CODE:018505



In terms of the Board Based Black Economic Empowerment Codes of Good Practise, EE Codes, WPIL South Africa (Pty) Ltd is classified as a start-up enterprise and therefor WPIL is exempt from the BEE codes for their first year of operation. The star-up exemption certificate is attached hereto for reference.

The business of PSV Services has been acquired by APE Pumps (refer to the attached letter) and is therefore trading under the APE Pumps BEE certificate. APE Pumps was verified as a QSE011 8486000 at their last verification in January 2012 (Certificate attached) and has since experienced significant growth. APE Pumps now far exceeds the maximum threshold for QSE's and had to commence with the additional transformation requirements to achieve a reasonable Generic BEE certificate. Gestalt is commissioned to project manage this transformation as well.

We placed on record that this process is processing well and APE Pumps is on track to obtain a valid BEE certificate of level 6 or better. This will be achieved in their current financial year ending 31 March 2013 and the commensurate BEE certificate will be available shortly thereafter.

For the sake of clarity, we can also confirm that the clients of APE Pumps (including PSV Services) will not be prejudiced in any way by the short delay in obtaining their new BEE certificate. The verification requirements are clear that a measure entity (meaning the clients of APE Pumps when doing their own BEE verification) get full preferential procurement recognition from any supplier with a BEE certificate that was valid at the start of their measure period or there-after.

Should you have any issues or concerns with respect to this correspondence feel free to contact the writer at any time.

Yours faithfully
Peter Robinson
Director

General Information

Details

APE Pumps

Business Name	APE Pumps (Pty) Ltd
Legal Entity	Private Company
Company Registration Number	2007/014880/07
Established	1952
Physical Address	26 Nagington Road Wadeville Germiston, 1422
Postal Address	P.O. Box 14733, Wadeville 1422 South Africa
Telephone Number	+27 11 824 4810
Facsimile Number	+27 11 824 2770
E-mail Address	info@apepumps.co.za
Directors	Mr. P Robinson Mr. P. Agarwal Mr. K.K. Ganeriwala

Commercial Information

Bank Details

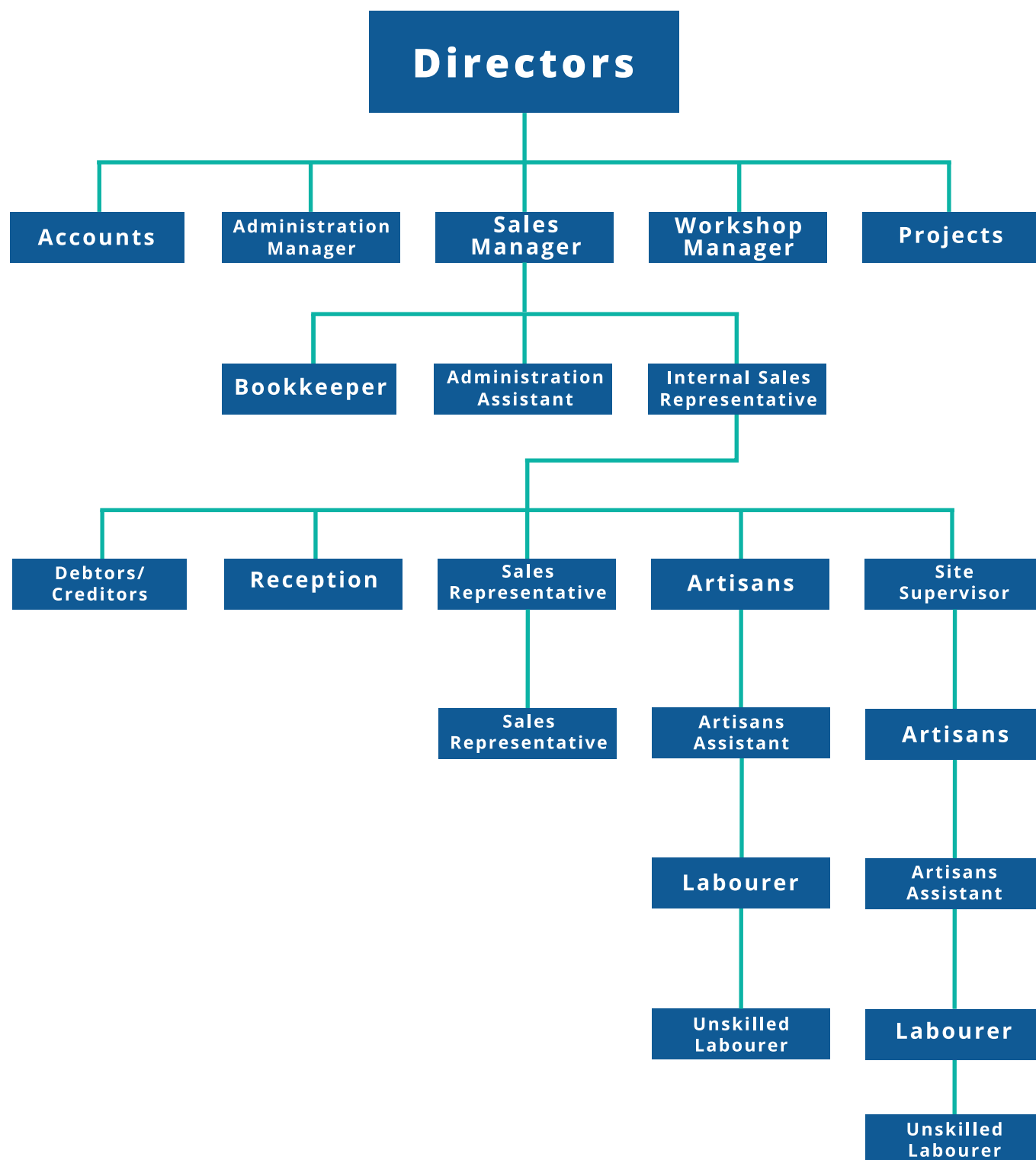
APE Pumps

Bank	Standard Bank
Branch	Bedford Gardens
Head Office Address	Rutland Gate Office Park 184 Hyde Lane Cnr Jan Smuts & William Nicol Avenues Hyde Park
Contact Person	Mr. Denesh Naidoo
Telephone Number	+27 11 280 4818
Facsimile Number	+27 86 507 9576

Insures

Company	Bannockburn Financial Services
Address	79 First Avenue Edenvale
Contact Person	Mr. Mike Wilson
Telephone Number	+27 11 452- 7581
Facsimile Number	+27 11 452- 7411

Head Office Organisation



Manpower Schedule

Technical Management
Administration Staff
Technical Supervisory Staff
Artisans
Semi-Skilled
Labourers

Engineers
Project Manager
Site Managers
Estimators
Planners
Surveyors
Procurement
Metallurgist
AQ/QC Specialist
Draughtsman Senior – Junior
Cad Operators
Technicians – Senior

Boilermaker
Bore – Mill Operator
Code 08 Drivers
Code 14 Drivers
Diesel Mechanics
Drivers Assistant
Electrician
Electrician (Wireman License)
Inspector (QC)
Instrument Fitter
Instrument Technician
Labourers
Mechanical / Maintenance Fitter
Pipe Fitter
Repair Shop Assistants (RSA)
Rigger
Semi-skilled Artisans
Supervisor Site
Toolmaker
Trade Assistants
Turner
Welder Coded
Welder Structural

Where required, APE utilize local labour on limited duration contracts, or contract labour to supplement core staff.

MAJOR COMPLETED PROJECTS ONLY BY PSV SERVICES AND APE PUMPS

Zimbabwe Power Corporation and Havelock Asbestos Mine Zimbabwe & Swaziland For Wright Dixon	Removal of 3.75MW steam turbines plus all auxiliary equipment, re-installation and Commissioning of all above equipment and new steam piping at Havelock Asbestos Mine Swaziland	US\$202'715-00
---	--	----------------

Completed - 1988

Botswana Meat Commission Lobatse Botswana for Wright Dixon	Installation of new Sulzer cooling towers installation of all auxiliary pipe work	US\$1'213'970-00
--	---	------------------

Completed - 1989

Sasol 1 Sasolbutg South Africa for Treatment (Pty) Ltd	Installation of fuel distribution network system 800 NB pipe all work in accordance to API 1104	US\$361'280-00
--	---	----------------

Completed - 1990-1991

Mzuzu Water Water Treatment	<p>Water Affairs Gullivar/Cilcon Joint Venture Mzuzu Water Treatment</p> <ul style="list-style-type: none"> -Supply and installation of intake pipe work and valves -Supply and erection of two high level storage tanks and stands -Supply and installation of numerous pump stations -Supply and installation of pipe work 600-50NB for complete treatment works -Supply and installation of complete water dosing equipment -Complete electrical, mechanical and instrumentation control system 	US\$1'111'778-00
--	--	------------------

Completed - 1992-1994

Josef Riepl Bau Ag Munich Germany	<p>Installation of 700NB pipe 70 bar working pressure x 3 kilometers Plus all auxiliary equipment for Hydro - electric scheme at Wovwe- Chilumba Malawi.</p>	US\$182'703-00
--	--	----------------

Completed - 1994-1995

Royal Swazi Sugar Simunye Swaziland	<p>Drought relief pump station 4 off high flow pumps and 300m 1200 pipeline, all Electrical controls and Engineering design. This Project was carried out in 8 weeks from design to Commissioning.</p>	US\$249'167-00
--	--	----------------

Completed - 1995

EMS – AEC Newco Project Fluropharm Pelindaba	Supply and install structural, piping and mechanical packages.	US\$966'667-00
---	--	----------------

Completed – 1998

National Starch Wadeville Gauteng	Supply and installation of mechanical structural, electrical and instrumentation – Glass dissolving packages plant.	US\$283'332-00
---	--	----------------

Completed – 1998

Blantyre Water Board Malawi	Installation of 35km of 700NB pipe 70 bar working pressure. All air valve chambers, crossover Tees and auxiliary equipment for Cathodic Protection on Duplication of pipelines.	US\$1'816'667-00
--------------------------------	---	------------------

Completed – 1998

Mozal Main Substation Mozambique	Supply and Install Test and Electrical Work, Commissioning Of Lighting and small power installation Including transformer, Distribution Boards and Street lighting.	US\$300'000-00
--	---	----------------

Completed – 1997-1998

Ilios Oil Edible Oil Refinery Gauteng	Supply and Install Test and Commissioning of Structural, Electrical Mechanical, Piping, and Instrumentation Packages	US\$383'334-00
--	--	----------------

Completed - 1998

Coca Cola Nampula Mozambique	Electrical Installation at the new Coca Cola Bottling Plant. Design, supply, And install and commission Main incoming supply 33kv Transformer main distribution Board, cabling and reticulation Hvac system.	US\$597'000-00
------------------------------------	--	----------------

Completed - 1999

Zomba Water Treatment Plant CMC/CCC Lahmeyer - Stewart Scott Joint Venture Zomba, Malawi	Turnkey Mechanical/Electrical New Water Treatment Plant Upgrade existing Plant New Intake Structure Pressure Reducing Station	US\$1'400'000-00
--	--	------------------

Completed - 1999 - 2001

CPMZ – Zimbabwe Beira Mozambique	Supply and Installation of New Fuel Receiving Station at Mutare – Zimbabwe: Installation of free issue Pig Receiver – Filtration units – Metering units and Prover Supply of all interconnecting pipe work. Supply and Installation complete Deluge System for fuel receiving station.	US\$320'000-00
--	--	----------------

Completed – 2002

CPMZ Zimbabwe	Supply of equipment and spares for high pressure pumps for transfer of fuel from Mozambique to Zimbabwe. Basic Engineering Re-design of pumps.	US\$920'000-00
------------------	--	----------------

Completed – 2004

Simunye Sugar	Supply and install 4 x Electric Actuator for main rive pumps And electrical control system	US\$70'000-00
---------------	---	---------------

Completed – 2004

Annual supply of maintenance Spares for Mather & Platt irrigation Pumps	US\$1'000'000-00
--	------------------

Completed

PCI – Grinaker/Lta Augostinho Neto University – Luanda	Installation of 3-off pump stations with supply & manufacturing of PVC – interconnecting Pipe works etc.	US\$230'000-00
--	--	----------------

Completed – 2004

Department of Water Affairs	Contract Number W8404 Supply of Piping, Pipe Fittings & Valves	US\$3'078'000-00
--------------------------------	--	------------------

Completed – 2004

Mopani Copper Mines Mufulira – Zambia	Supply and installation of 450NB High Pressure Rising Main in Mineshaft, including connections On to existing pump sets complete Length 550m. Removal of redundant 400NB Pipeline from Mine-shaft	US\$586'000-00
---	---	----------------

Completed – 2007

Mopani & Luan- shya Copper Mines	Ongoing Pump Refurbishment Projects for Mopani & Luanshya Mines "Pump Repairs at Mindola Workshops" MC2417.1	US\$14'000'000-00
--	--	-------------------

Completed 2007

Department of Water Affairs	Contract Number W8891 Supply of Piping, Pipe Fittings & Valves	US\$2'307'693-00
-----------------------------	---	------------------

Completed – 2009

Mopani Copper Mines, Zambia	Renewing of Pump Refurbishment Project (MC2471.1) for 5 “years” (JBS 00095) which includes supply of all Pump parts & pump refurbishment at The Mindola Workshop in Kitwe.	US\$32'000'000-00
-----------------------------	--	-------------------

Completed

R.S.S.C-Simunye/ Mhlume Sugar	Supply and installation of 3-off complete weir gate ass'blies with Driving equipment (including of closing Off 4,2m High River flow at each Weir)	US\$188'500-00
-------------------------------	---	----------------

Completed 2007

Blantyre Water Board, Malawi	Manufacturing & supply of spare parts for Mather & Platt pumps And supply of 1-off complete Pump set With 3-stage PSV 80LF4 pump.	US\$ 566'426.00
------------------------------	---	-----------------

Project Ongoing

Mopani CM Nkana	Manufacture & Supply of 2-off HPH 58 / 54-25-4 stage pumps with Internal parts all coated for acid water Pumping	US\$325'000-00
--------------------	--	----------------

Completed 2007

NFC – African Mining, Chambishi CM, Zambia	Manufacture & supply of HPH 54-25-5+1 stag pump with supply of maintenance spares of HPH54-25 pumps	US\$951'803-00
---	--	----------------

Completed 2009

Dahlman The Netherland (For Abadan Refinery, Iran)	Manufacturing & Supply of 96-off Complete Swirl Vane Units, all Produced from Special Stainless Steel, including the investment casted Swirl Vane Component which is the “Heart” of large Filter/Scrubber Units For the Refineries	US\$ 1'076'914.00
---	---	-------------------

Completed 2010

Lusaka Water & Sewerage Corp (In Joint Venture With Civil Partner RJR Construction, Zambia LTD)	The Contract is for the overhaul of Iolanda WTW, which delivers . The Major amount of potable Water to Lusaka. Next to the Civil Requirements, the Projects includes for the Mech/Electr. Supply & Installation of a New River Intake Pump Station (with APE Vertical Turbine Pumps) as well as Overhaul of other Pumps and Plants	US\$ 2'810'000.00 (PSV-Involvement)
--	--	--

Completed 2011

RSSC Simunye Sugar Swaziland	Refurbishment of a 1200 NB & 1500 NB – Larner Johnson Valve	US\$ 100'000.00
------------------------------	---	-----------------

Completed 2010

Department of Water Affairs	New Contract NO: W10159 for the supply of PVC-Pipes, Pipe Fittings and Valves for 3 years	Appr. US\$ 8'000'000.00 to 9'000'000.00
-----------------------------	---	---

Completed 2012

NICICO Iran Sungun Copper Mines	Supply/Manufacturing and Commissioning of 8 Slurry Pump Sets Complete with VSD's and Spare Parts	US\$ 5'560'000.00
---------------------------------	--	-------------------

Completed 2014

NICICO Iran Sungun Copper Mines	Supply of auxiliary Pump Sets for Sungun Copper Mine	US\$ 1'200'000.00
---------------------------------------	--	-------------------

Completed 2014

Blantyre Water Board Malawi	Rehabilitation and Renewal Works, At CHILEKA PUMPING STATION, Incl all New High Pressure Pump Sets, With all Electrical and Civil Works / Supply Contract completed in Association with WPIL – India	US\$ 6'880'000.00
--------------------------------	--	-------------------

Completed 2015

Blantyre Water Board Malawi	Emergency Manufacture and Supply of Spares for existing Mather & Platt, Size 9" x 11" HP-Pump Sets, at Chile- ka Pumping Station.	US\$ 218'000.00
--------------------------------	--	-----------------

Completed 2014

Blantyre Water Board Malawi	Rehabilitation and Renewal Works at WALKER'S FERRY INTAKE – and HIGH LIFT PUMPING STATION, Incl. Installation and Completion Of part existing Mechanical Equipment With New Supply and Installation / Commissioning, of Electrical Equipment In Association with WPIL India.	US\$ 4'484'000.00
------------------------------------	--	-------------------

Completed 2015

Eigenbau On going	Supply 12 off Axil Flow Pumps. To replace existing APE Axil Flow Pumps Speed of Pumps increased, increase head And Flow of Pumps	R 4 500 000.00
--------------------------	--	----------------

Rand Water On going	Pump Overhaul Refurbishment of two Allis Chalmers 20" Split Case Pumps. Manufacturing of new Rotating Assembly Bearing Housings and Bush Bearings. Casings coated with Belzona Pump Assembly and Installation	R 5 000 000.00
----------------------------	---	----------------

Jet Mixer Project On Going	Supply 2 off Mixer Pumps 33mm Long 90 Kw Motor, Wet End and Columns Rotate on a Slewing Ring for Crude Oil Storage Tanks	R 15 000 000.00
-----------------------------------	--	-----------------

Durban Heights
On Going

Vertical Pump
Refurbishment

R

Umgeni
Waterloo

Supply, Install and
Commission Pump Sets
including Auxillaries at
Waterloo Pump Station

R 14 600 514.00

Umgeni
Ezakeni

Refurbishment of Raw
Water Abstraction pump
Station at Ezakeni Water
Treatment Plant

R25 745 734.00

Umgeni La
Mercy

Supply, install and
Commission. The Pump
Sets, Incl. Auxillaries at
Verulam La Mercy Pumping
Station

R68 742 486.00

APE / MATHER & PLATT PRODUCT LIST

We supply pumps and spares for the following manufactures:

Mather & Platt
KSB
Howden
Thompson Kelly & Lewis
Nowa
Wilden
Sulzer
APE
Weir: Harland (Salweir)
Envirotech
SPP (Sigmond Pulsometer)
Stork Pumps